

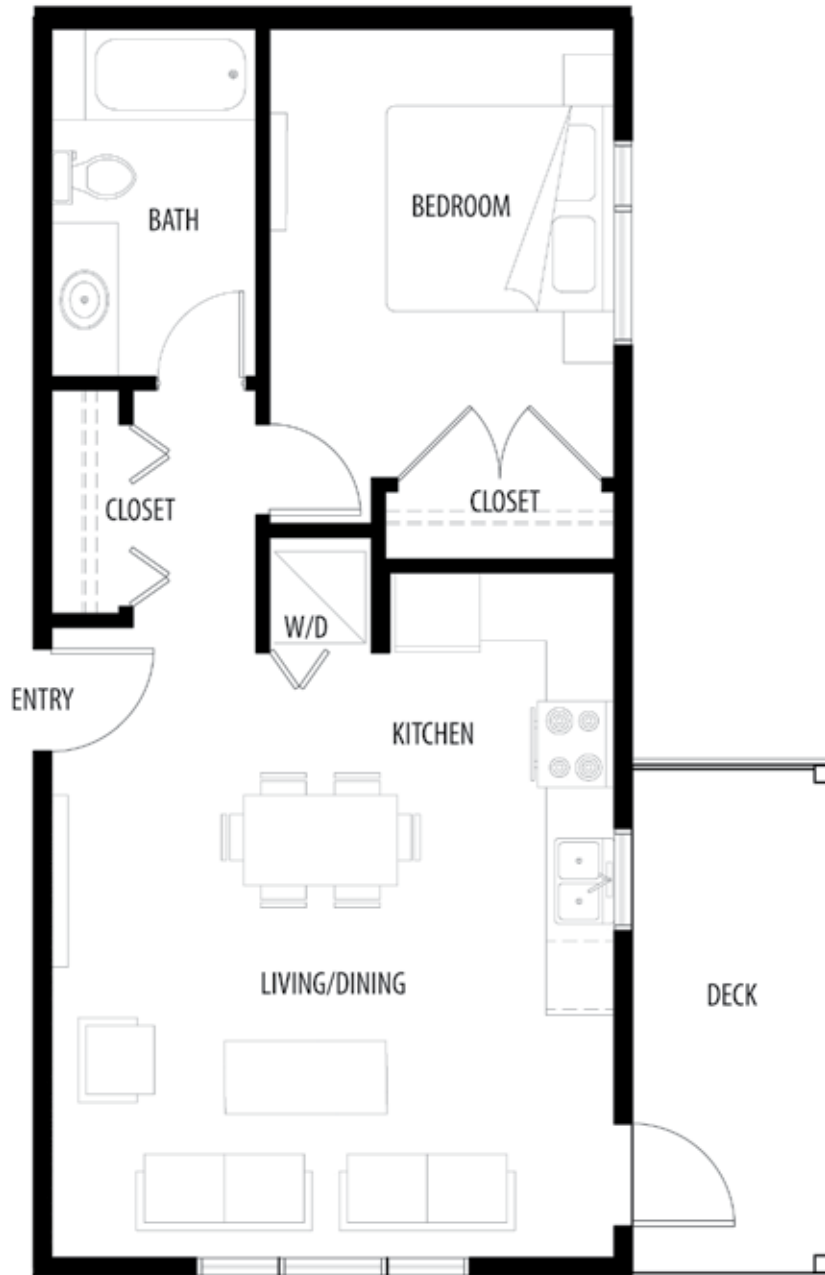


## **FLOOR PLANS**

TEL: 778.885.6700

In a continued effort to improve the quality of new home construction and due to fluctuations in the market availability of materials and products, the developer reserves the right to make changes and modifications, without notice of plans, materials and products. Dimensions may vary with actual plan survey. Consult your sales representative for clarification on particular options. The final construction drawings override floor plan and elevation images. All photographs are representations only. E.&O.E.

**[WWW.AMAYALIVING.CA](http://WWW.AMAYALIVING.CA)**



**LEVEL 1 - SUITE 101**  
**LEVEL 2 - SUITE 204**  
**LEVEL 3 - SUITE 304**

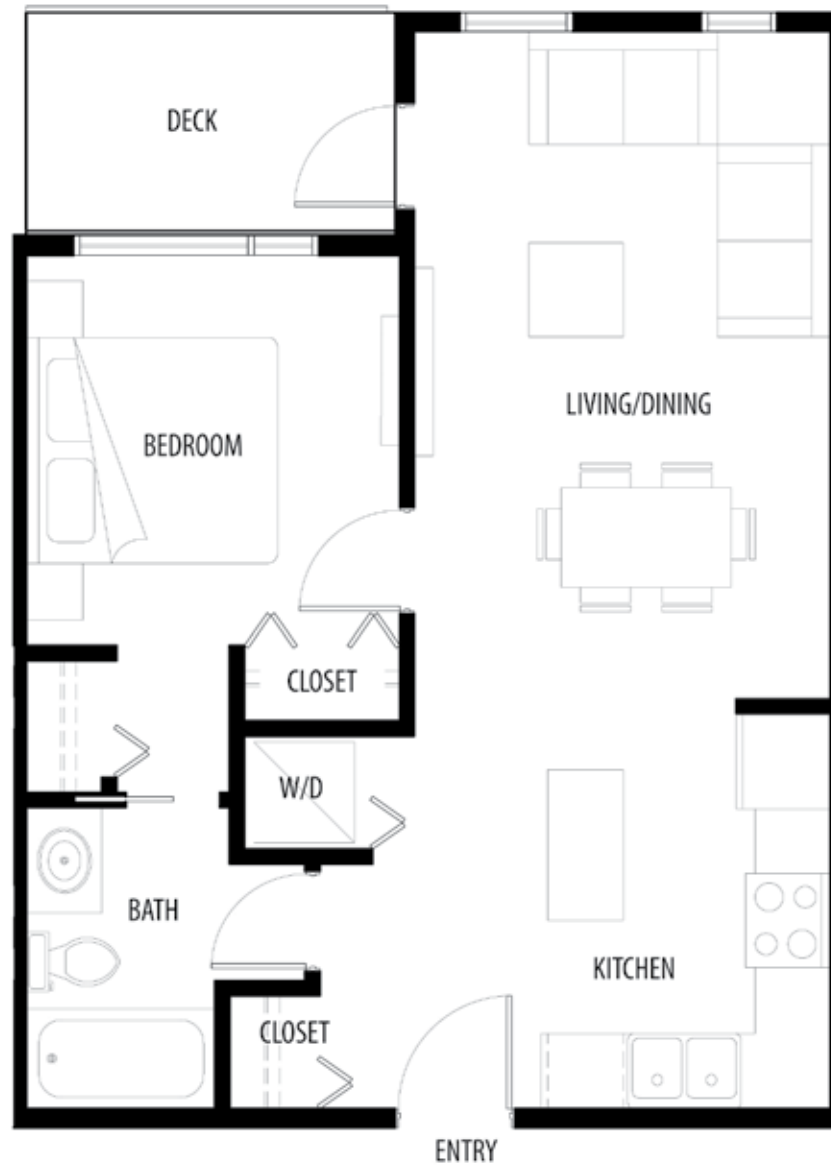
**LEVEL 4 - SUITE 404**  
**LEVEL 5 - SUITE 504**



**LEVEL 2 - SUITE 206**

**LEVEL 3 - SUITE 306**

**LEVEL 4 - SUITE 406**



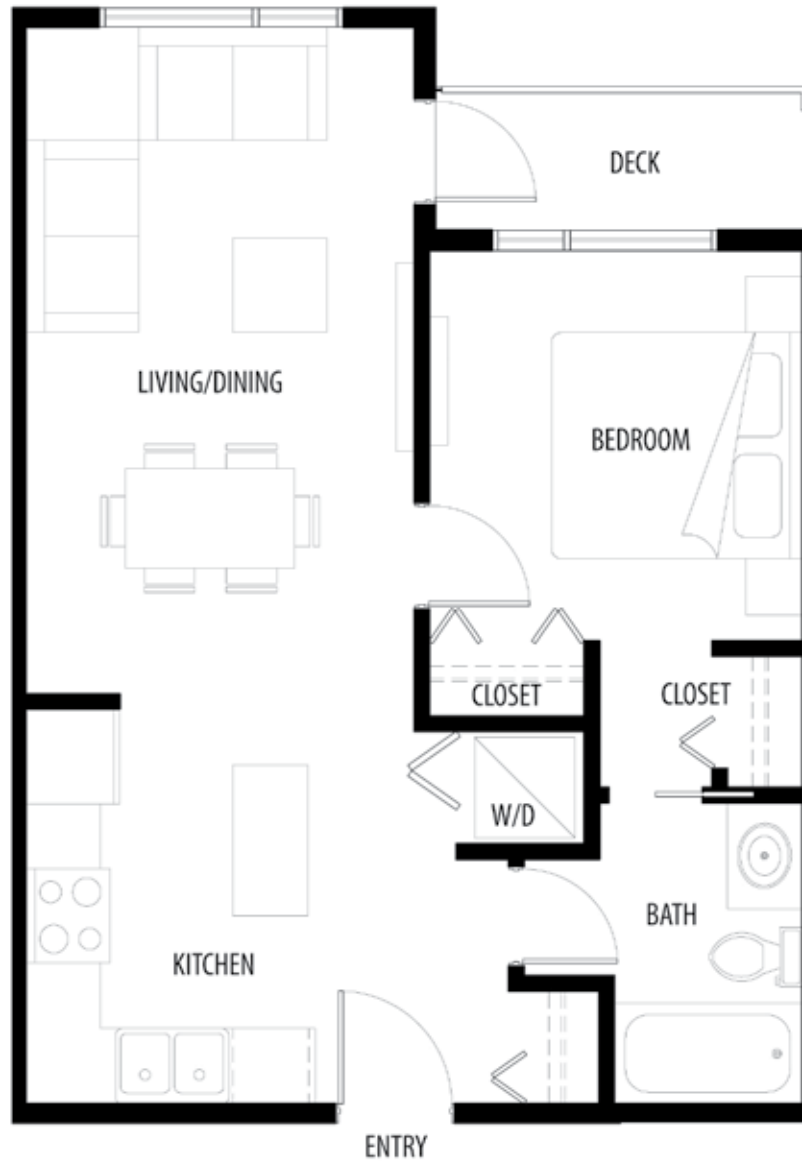
**LEVEL 3 - SUITE - 308, 309**

**LEVEL 4 - SUITE - 408, 409**

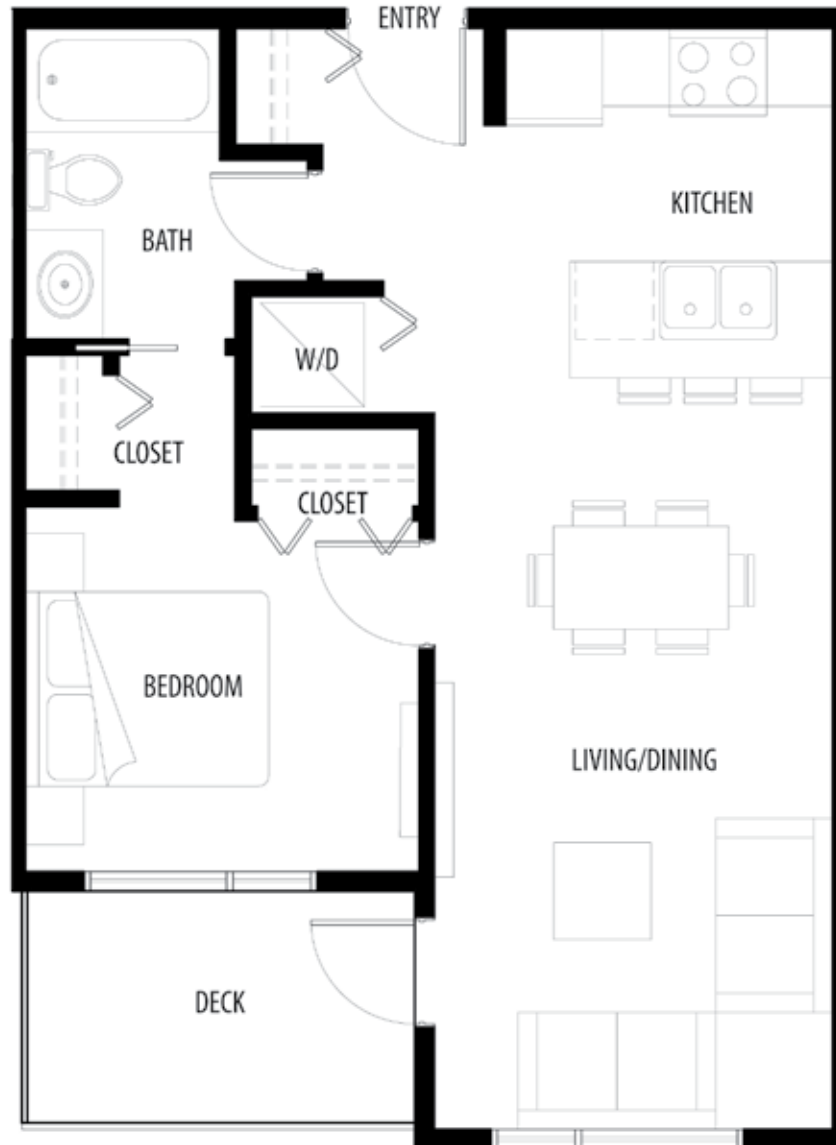


**LEVEL 3 - SUITE - 313, 314**

**LEVEL 4 - SUITE - 413, 414**



**LEVEL 3 - SUITE - 311**  
**LEVEL 4 - SUITE - 411**



**LEVEL 2 - SUITE - 202**

**LEVEL 3 - SUITE - 302**

**LEVEL 4 - SUITE - 402**

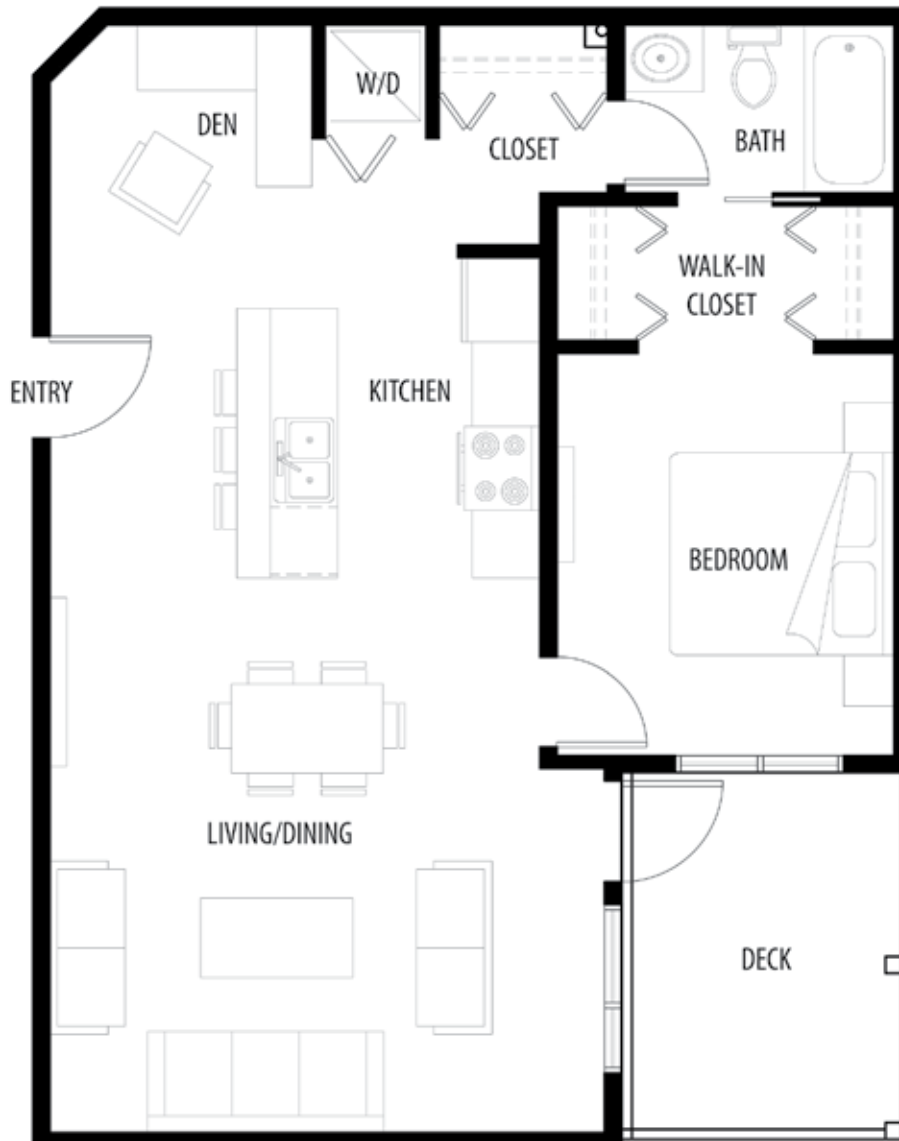
**LEVEL 5 - SUITE - 502**



**LEVEL 5 - SUITE - 509**



**LEVEL 5 - SUITE - 505**



**LEVEL 2 - SUITE - 203**

**LEVEL 3 - SUITE - 303**

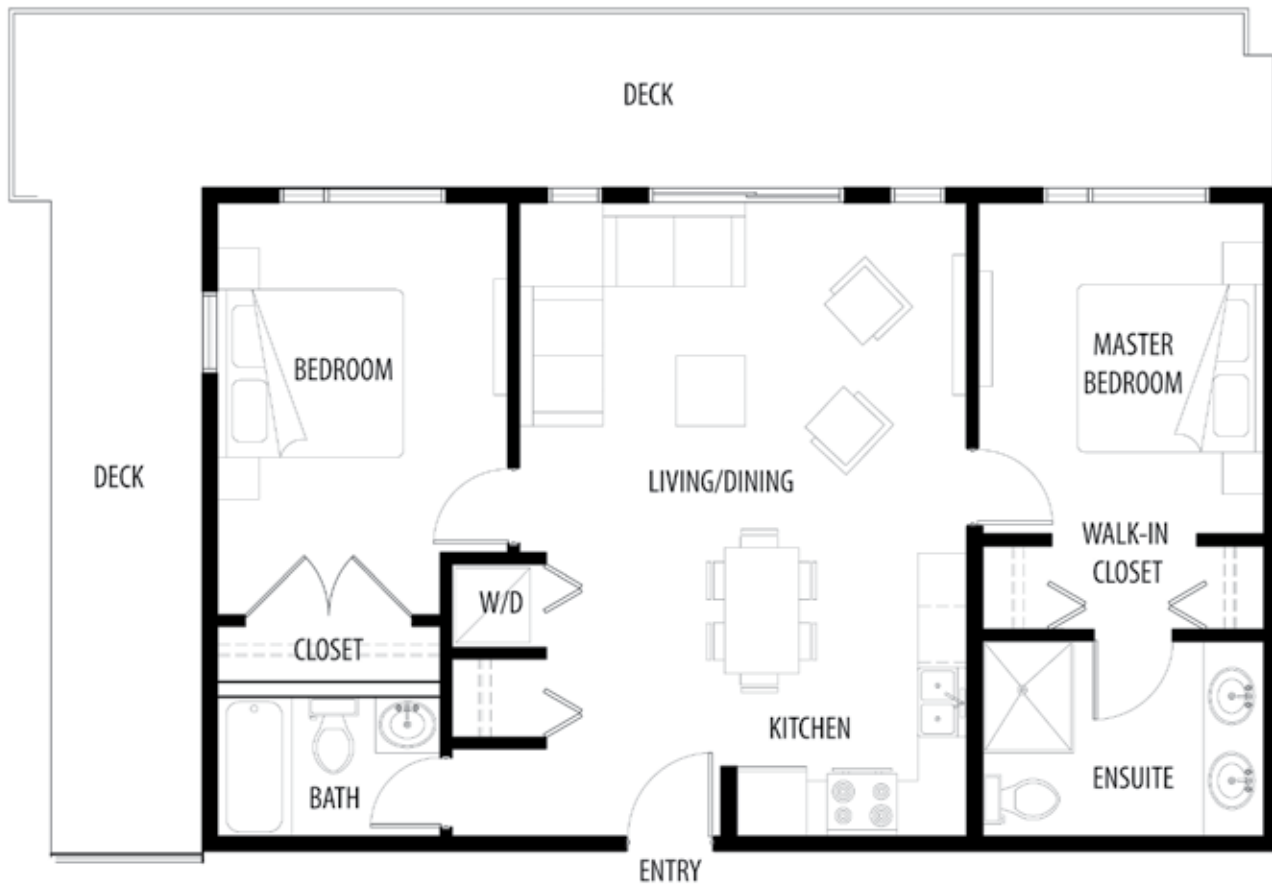
**LEVEL 4 - SUITE - 403**

**LEVEL 5 - SUITE - 503**

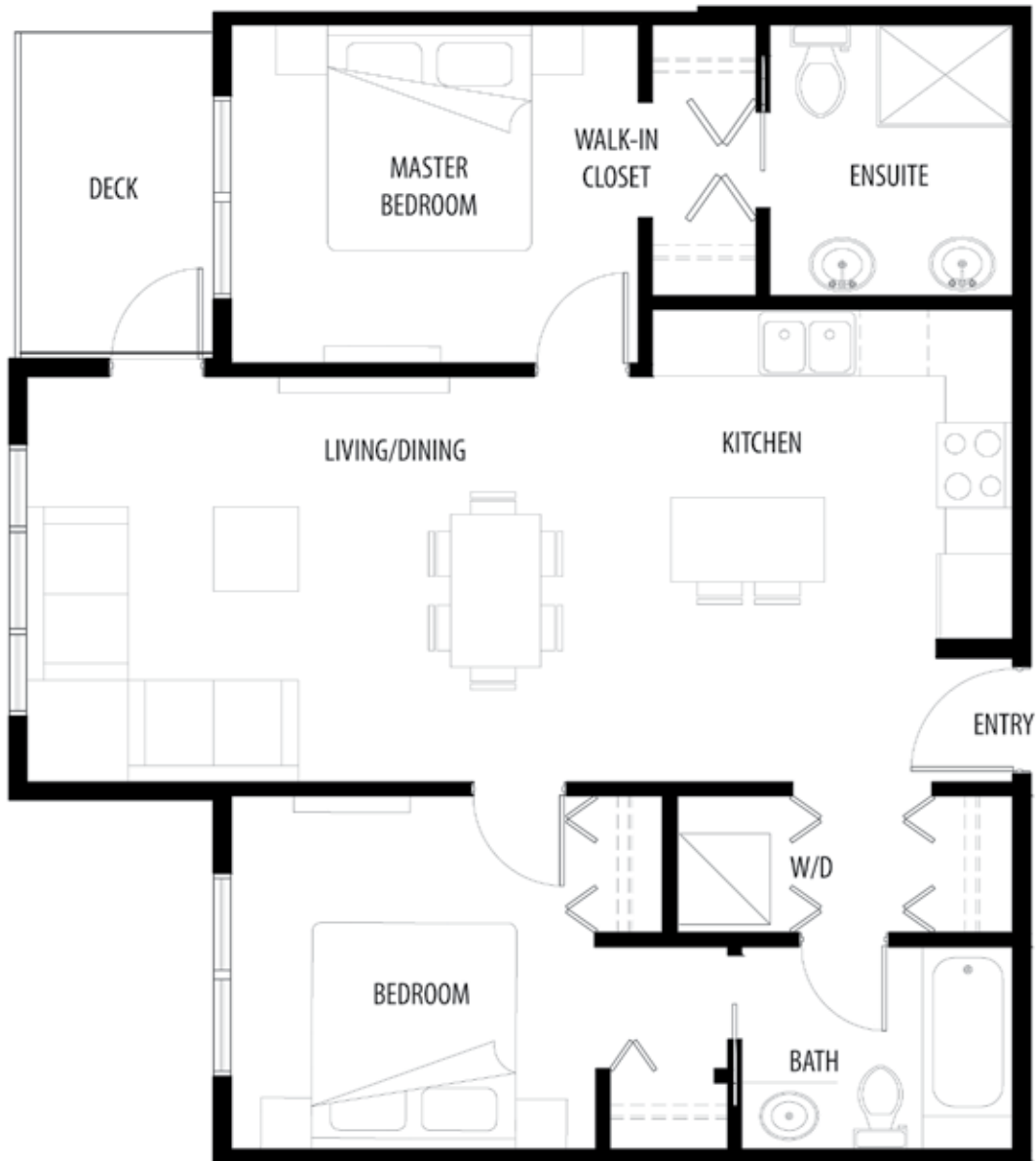


**LEVEL 3 - SUITE - 315**

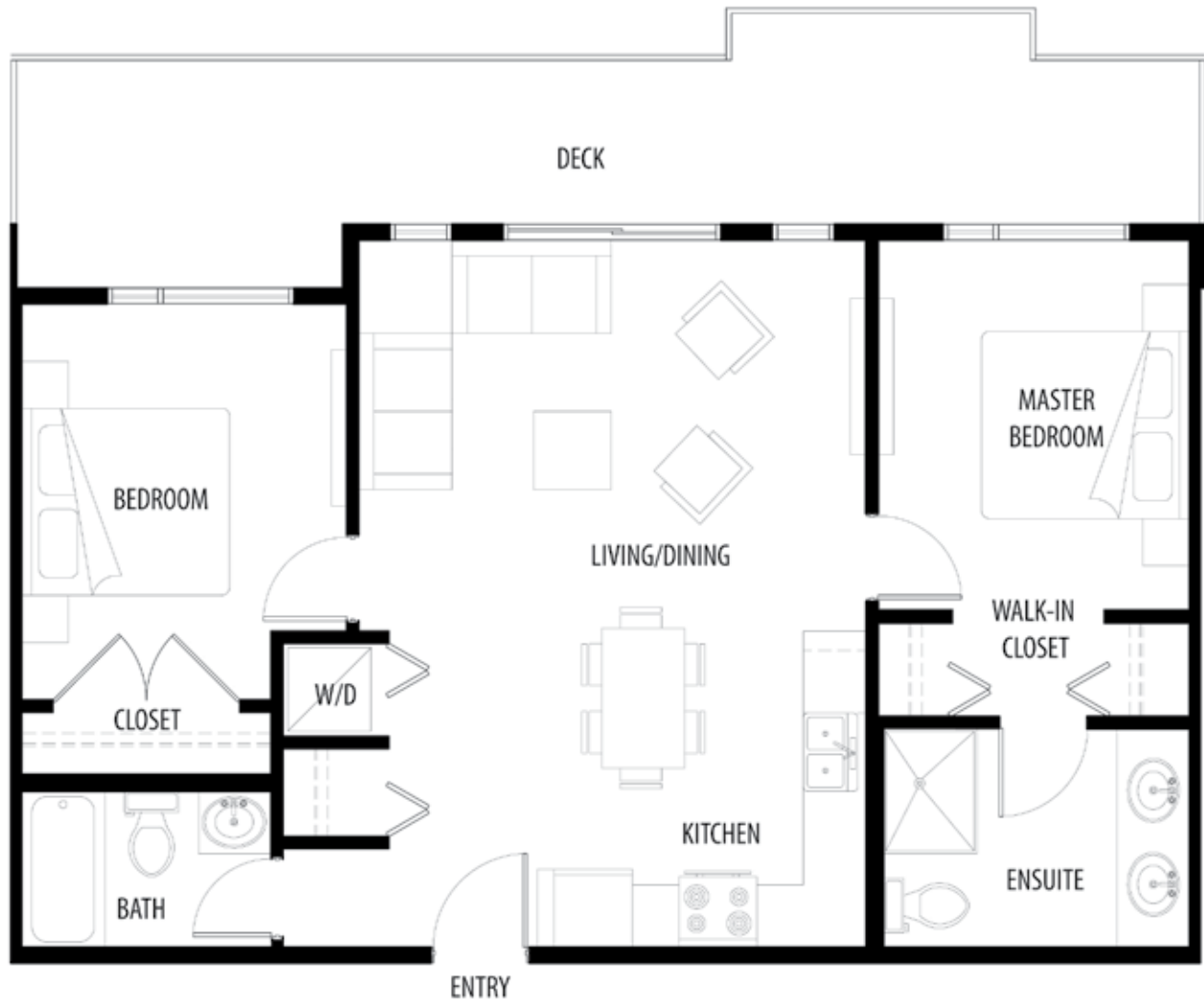
**LEVEL 4 - SUITE - 415**



**LEVEL 5 - SUITE - 507**



**LEVEL 1 - SUITE 102**



**LEVEL 5 - SUITE - 508**



**LEVEL 5 - SUITE - 512**

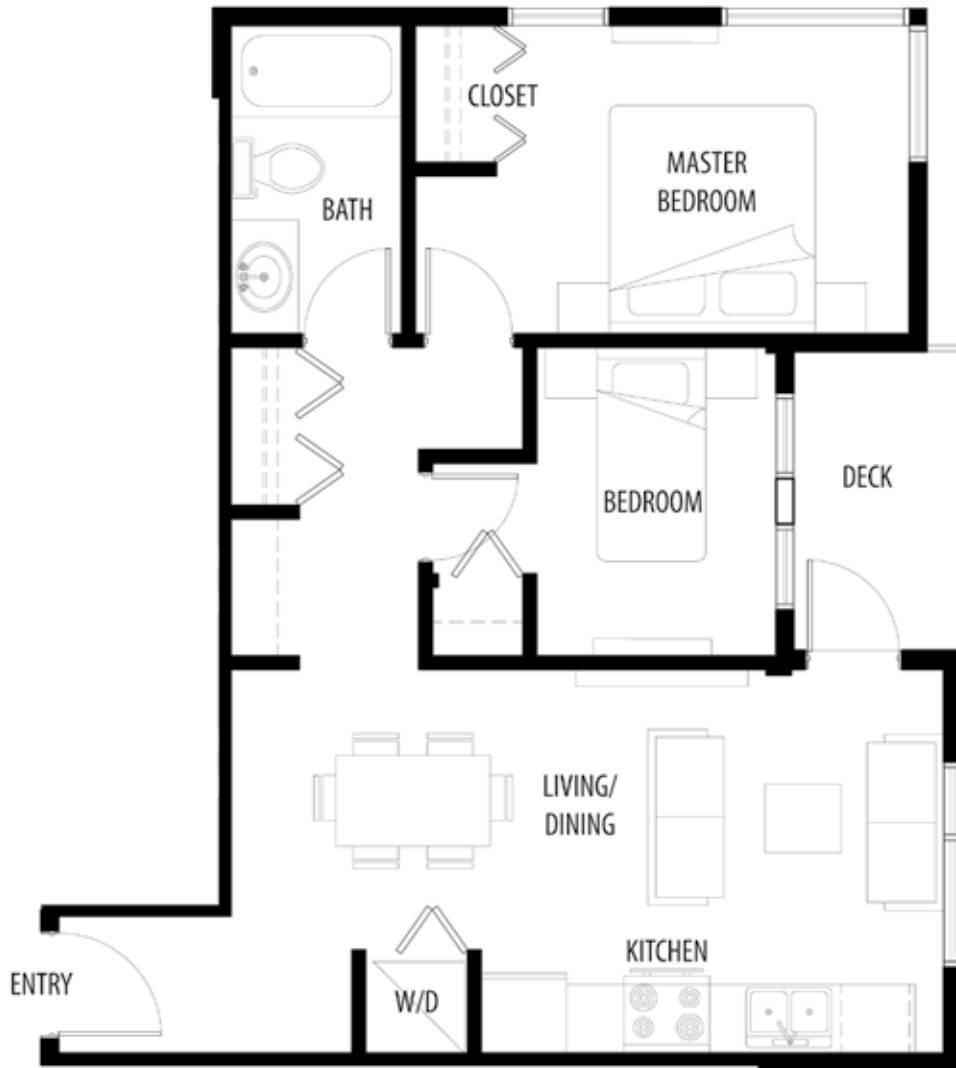


**LEVEL 2 - SUITE - 201**

**LEVEL 3 - SUITE - 301**

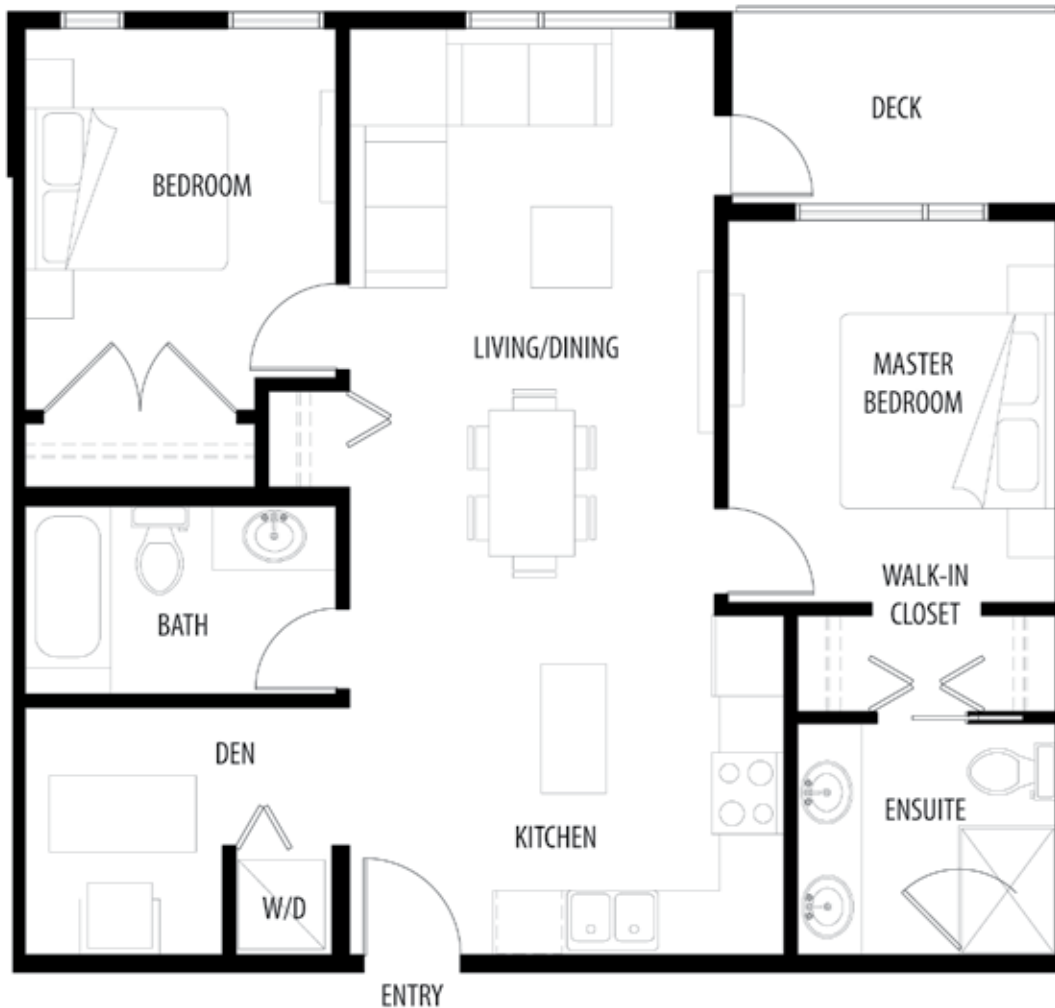
**LEVEL 4 - SUITE - 401**

**LEVEL 5 - SUITE - 501**



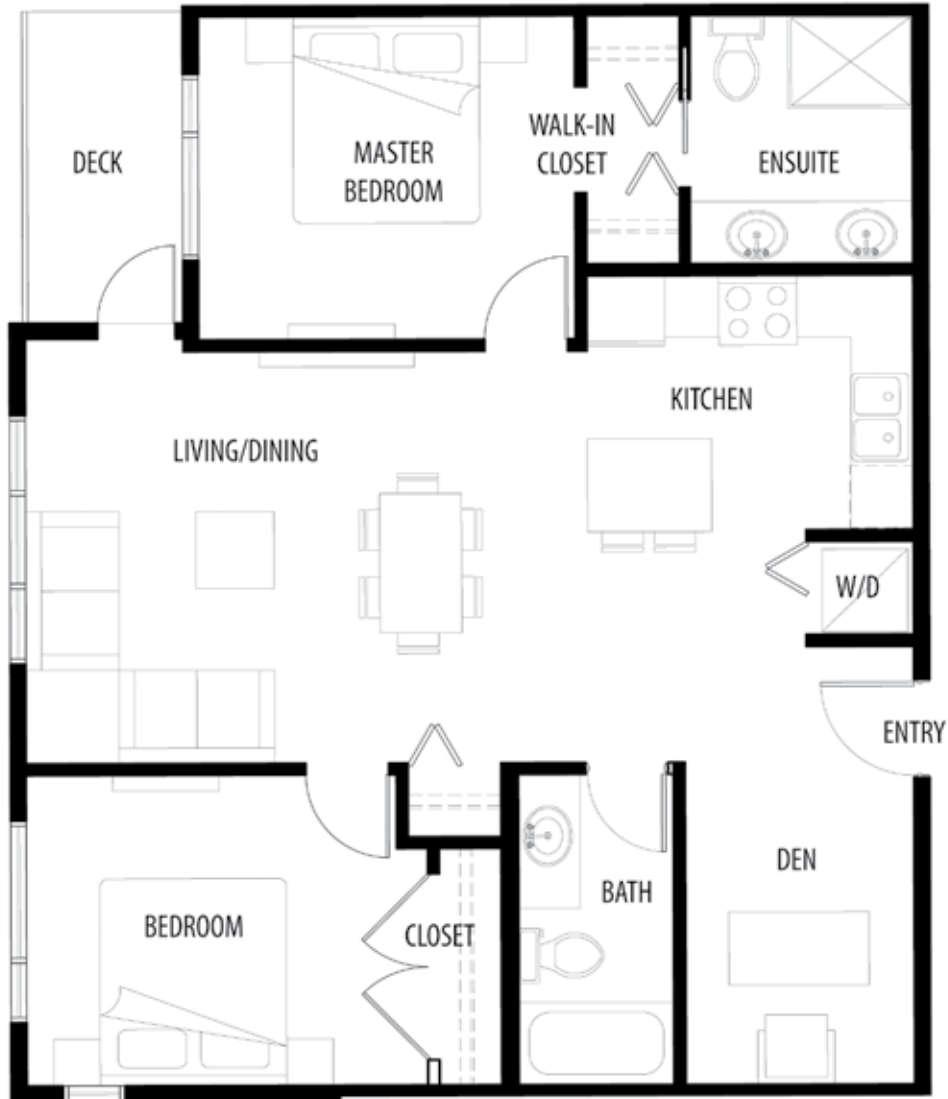
**LEVEL 3 - SUITE - 312**

**LEVEL 4 - SUITE - 412**

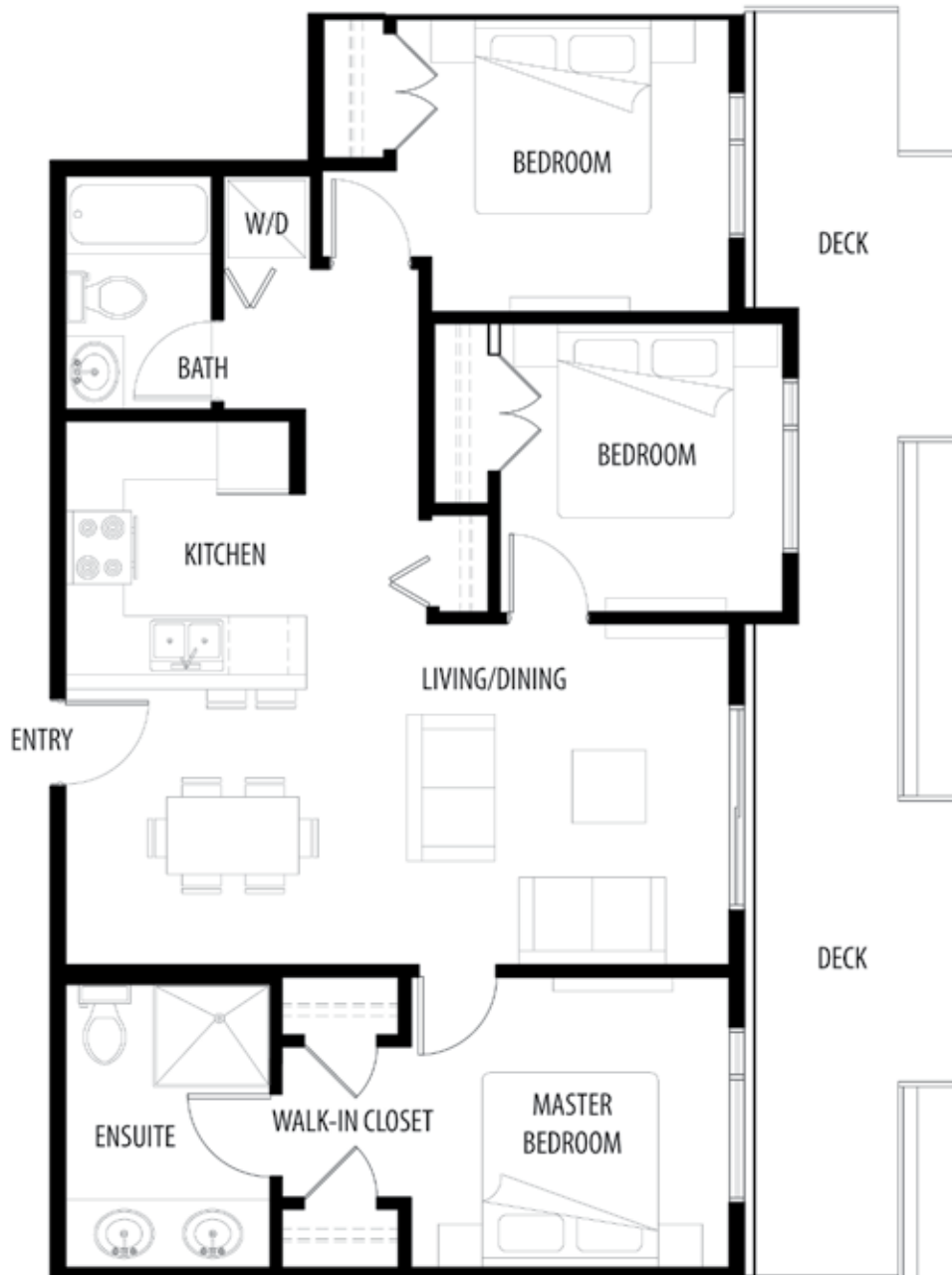


**LEVEL 3 - SUITE - 310**

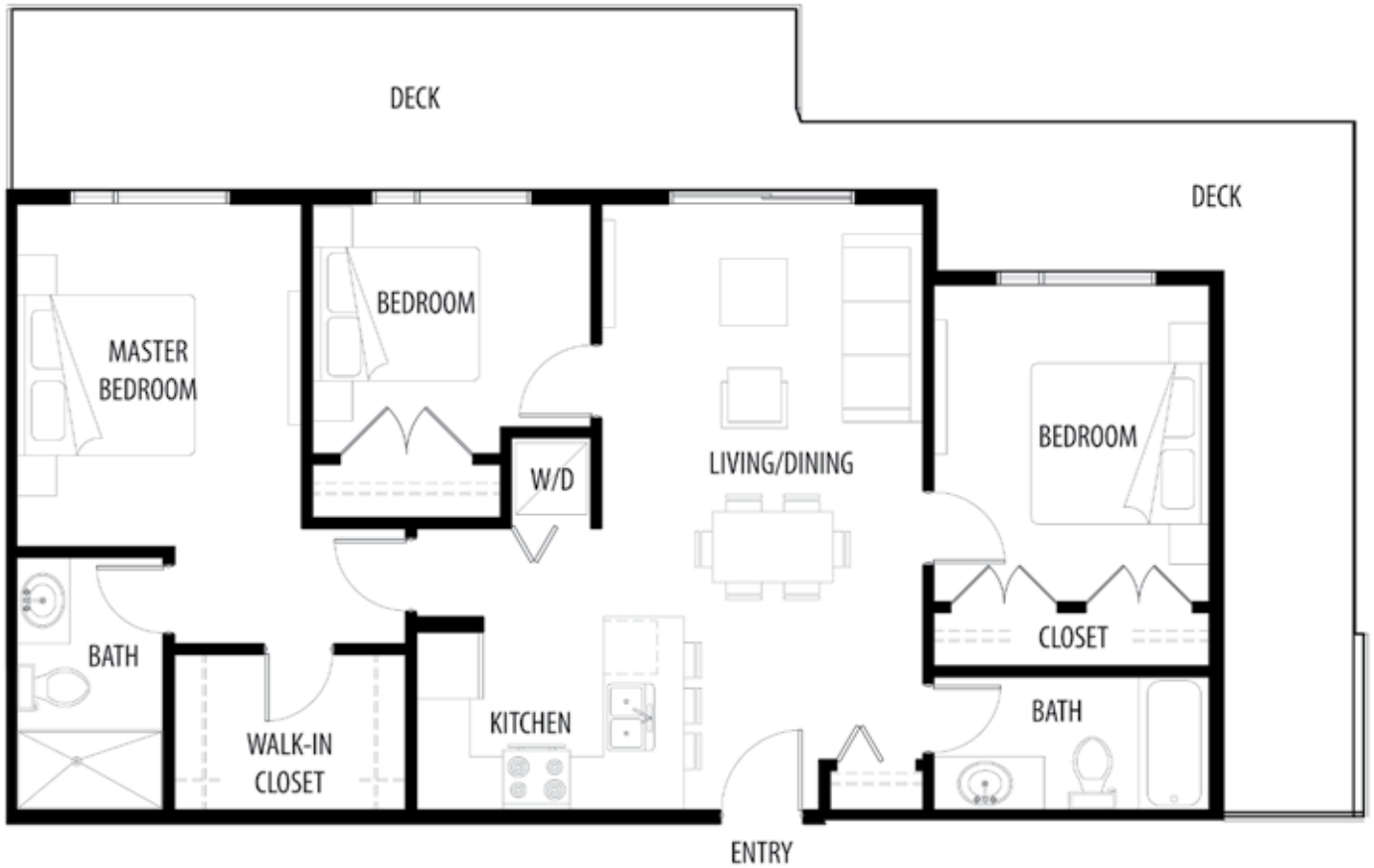
**LEVEL 4 - SUITE - 410**



**LEVEL 2 - SUITE - 205**  
**LEVEL 3 - SUITE - 305**  
**LEVEL 4 - SUITE - 405**



**LEVEL 5 - SUITE - 506, 511**

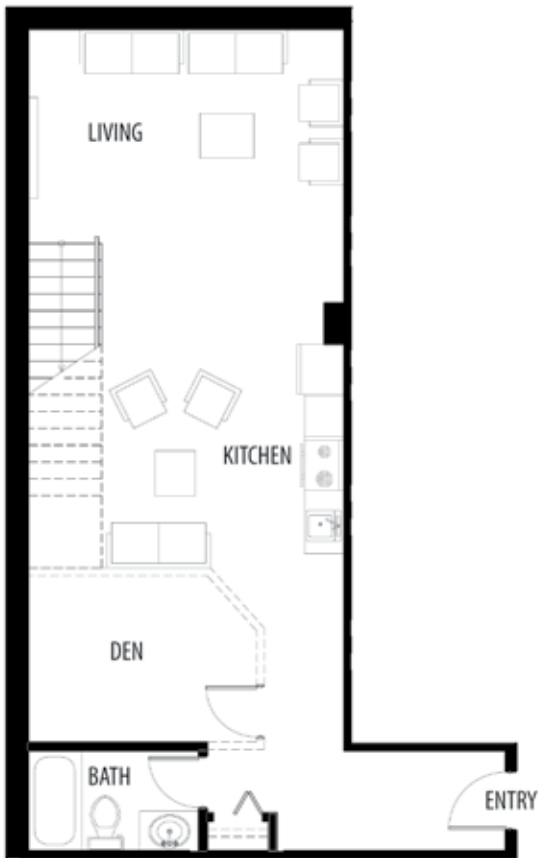


**LEVEL 5 - SUITE - 510**



**LEVEL 3 - SUITE - 307**

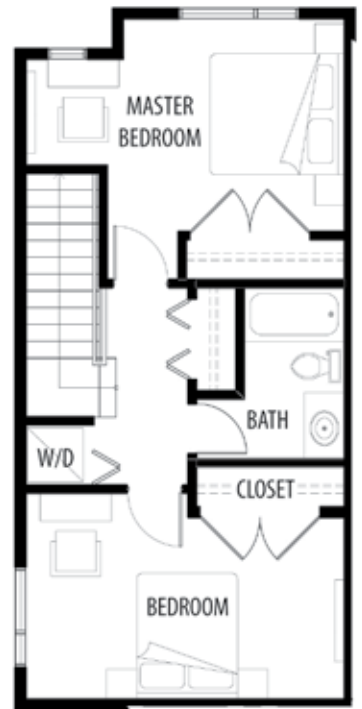
**LEVEL 4 - SUITE - 407**



BASEMENT  
767 S.F.

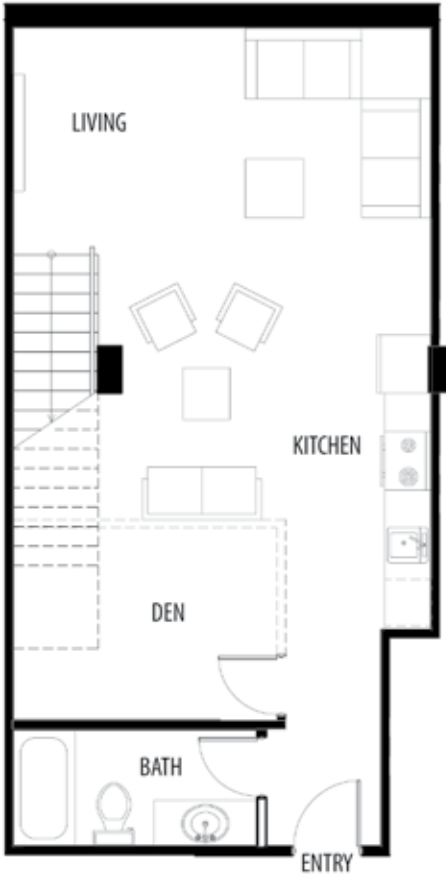


MAIN FLOOR  
584 S.F.



SECOND FLOOR  
568 S.F.

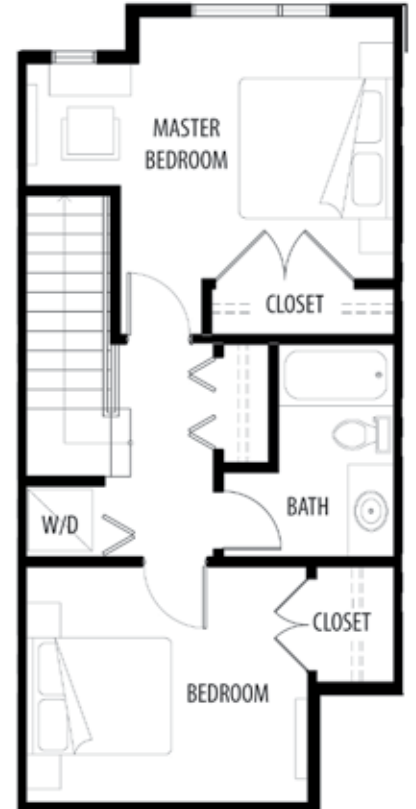
LEVEL 1 - SUITE - 103



**BASEMENT**  
648 S.F.

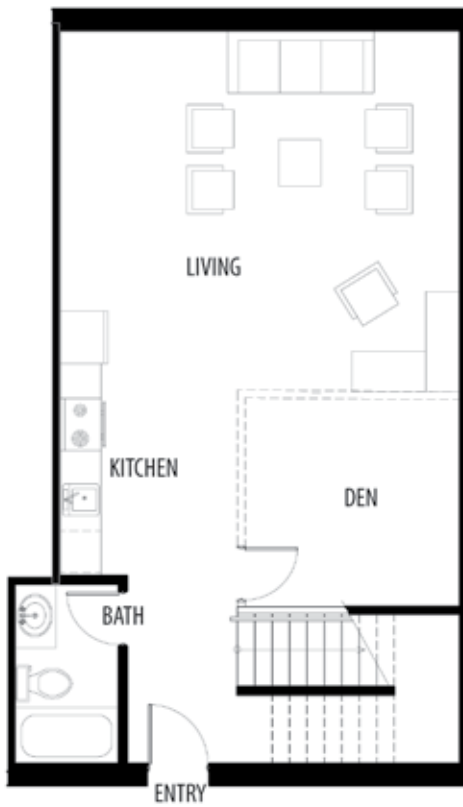


**MAIN FLOOR**  
479 S.F.

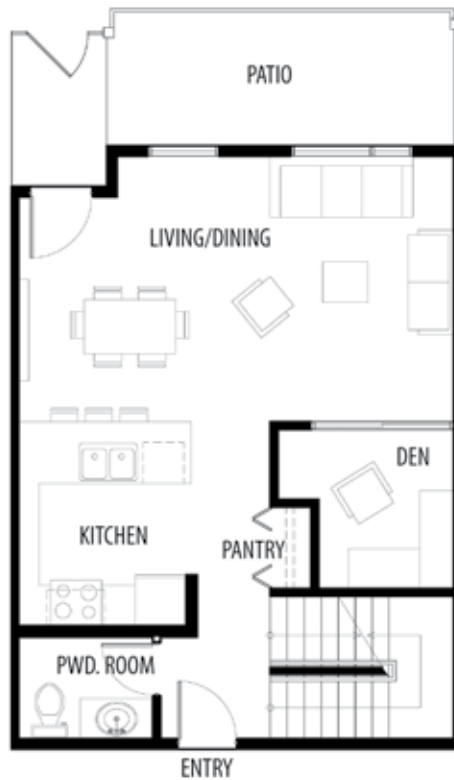


**SECOND FLOOR**  
544 S.F.

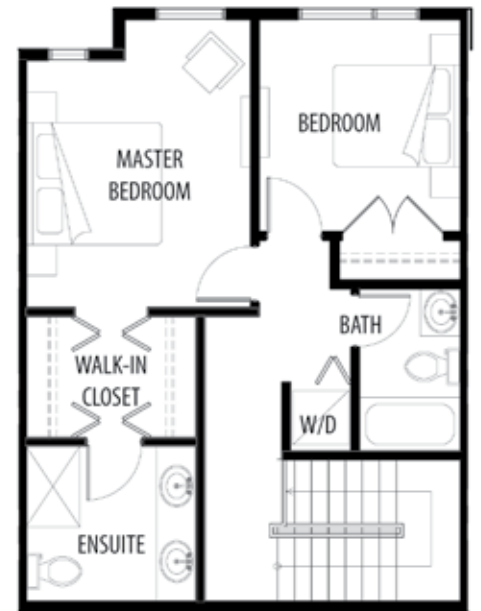
**LEVEL 1 - SUITE - 104**



**BASEMENT**  
732 S.F.

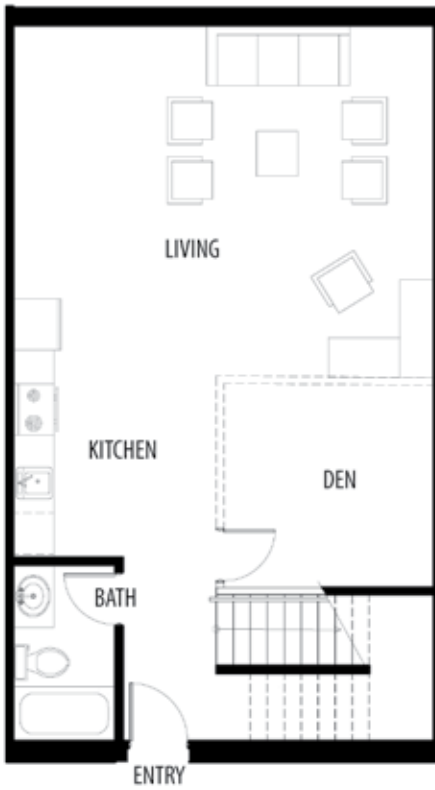


**MAIN FLOOR**  
641 S.F.

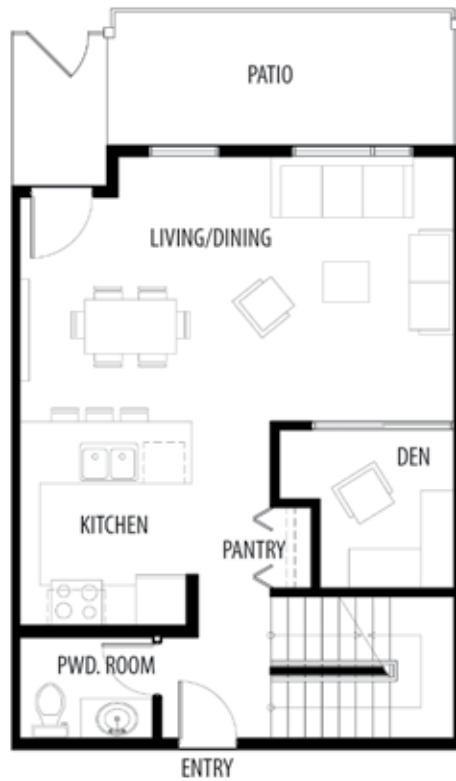


**SECOND FLOOR**  
642 S.F.

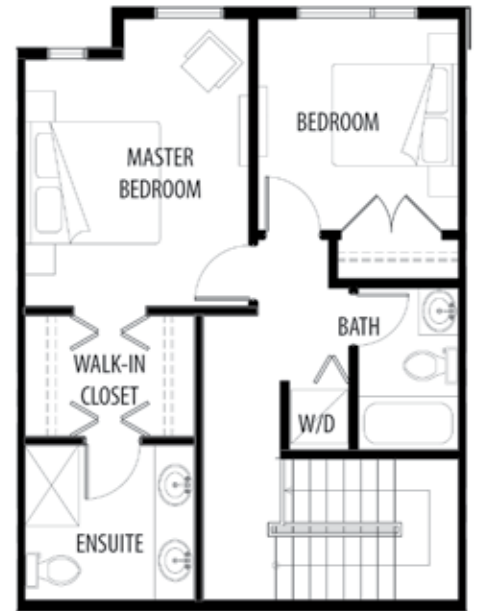
**LEVEL 1 - SUITE - 105**



**BASEMENT**  
762 S.F.



**MAIN FLOOR**  
641 S.F.

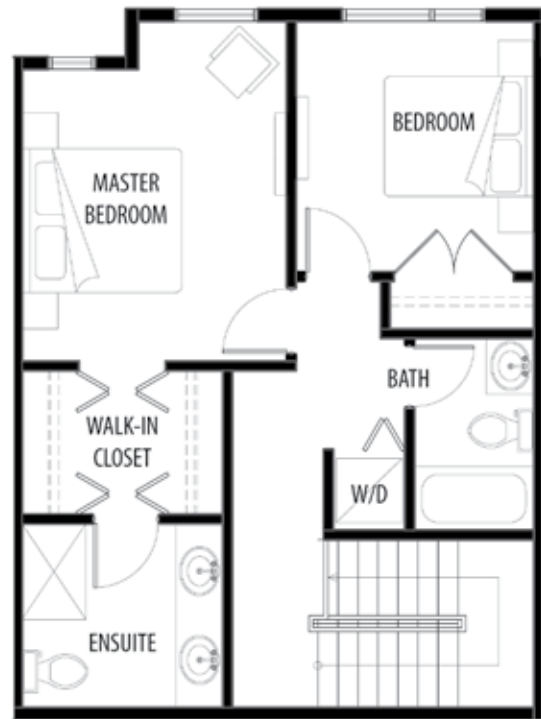


**SECOND FLOOR**  
642 S.F.

**LEVEL 1 - SUITE - 106**

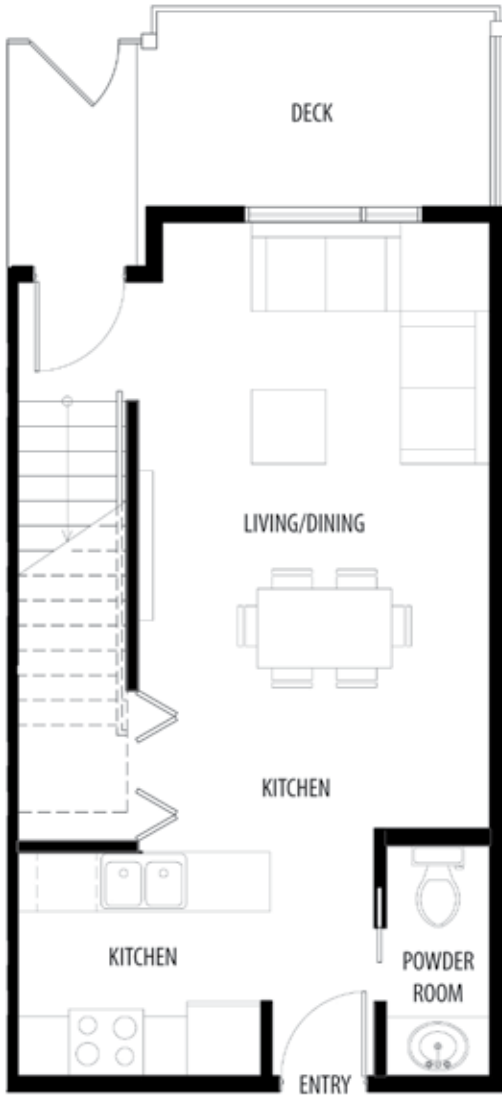


MAIN FLOOR  
642 S.F.



SECOND FLOOR  
642 S.F.

**LEVEL 1 - SUITE - 107, 110**



MAIN FLOOR  
484 S.F.

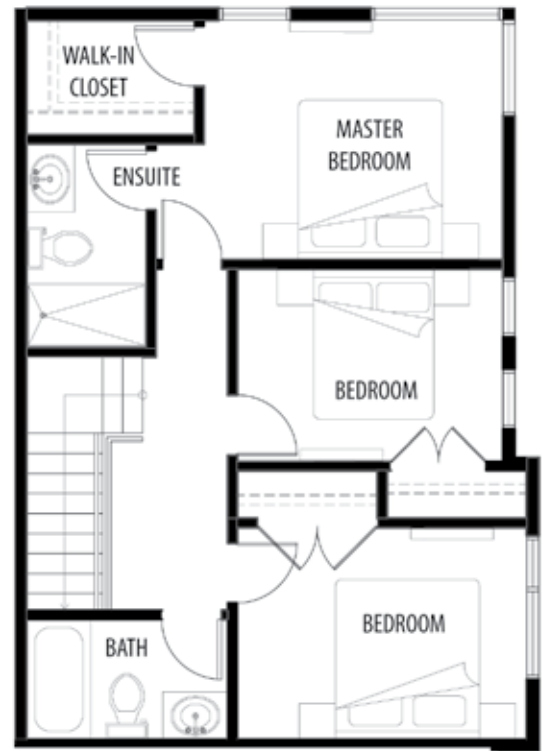


SECOND FLOOR  
484 S.F.

**LEVEL 1 - SUITE - 108**

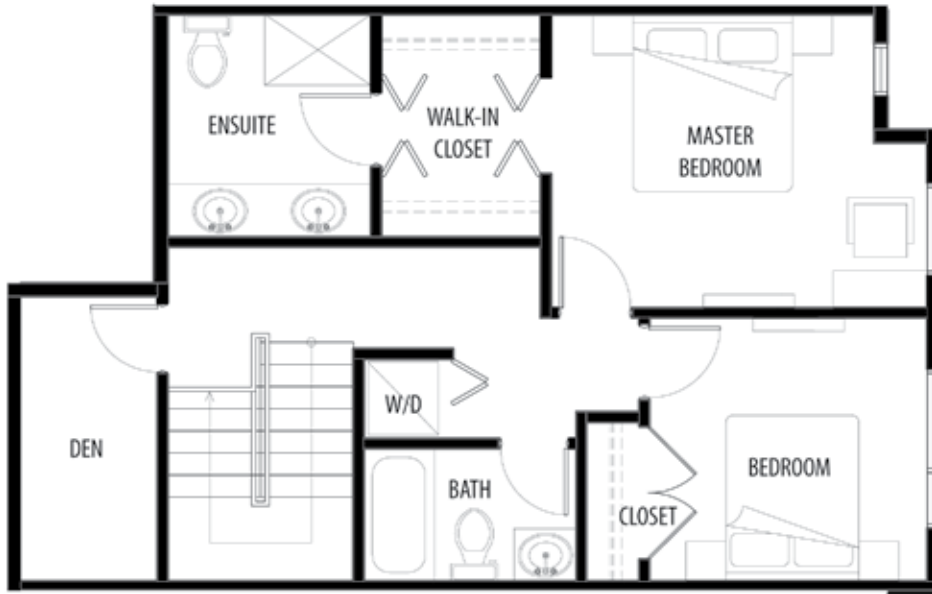


MAIN FLOOR  
654 S.F.



SECOND FLOOR  
654 S.F.

### LEVEL 1 - SUITE - 109

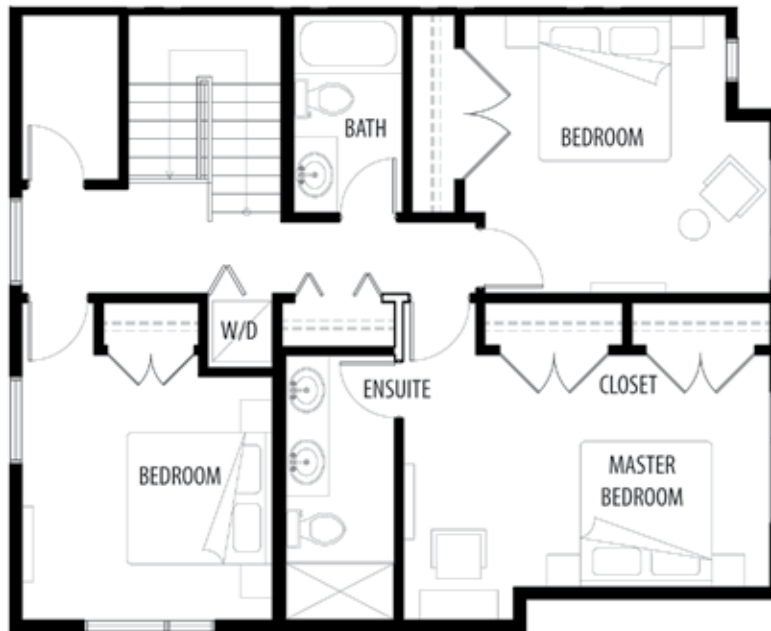


SECOND FLOOR  
705 S.F.



MAIN FLOOR  
642 S.F.

**LEVEL 1 - SUITE - 111**



SECOND FLOOR  
970 S.F.



MAIN FLOOR  
971 S.F.

LEVEL 1 - SUITE - 112

AMAYA  
LIVING

TEL: 778.885.6700

[WWW.AMAYALIVING.CA](http://WWW.AMAYALIVING.CA)